

# BARN PLAN

START A CONVERSATION BASED ON THIS PLAN

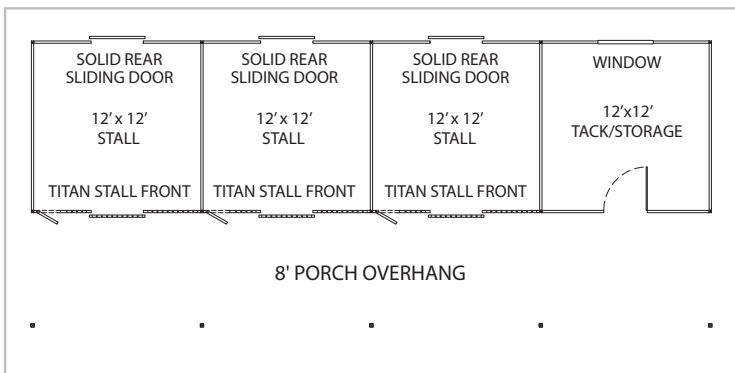
## FCP-S-101A or FCP-S-101B



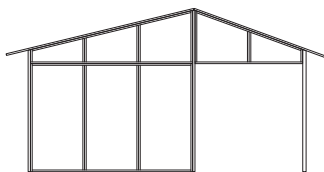
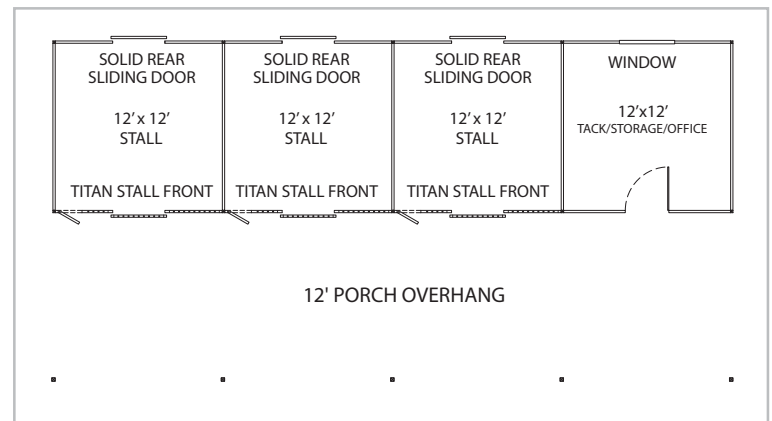
**BARN & BUILDINGS**

*Creative Steel Solutions*

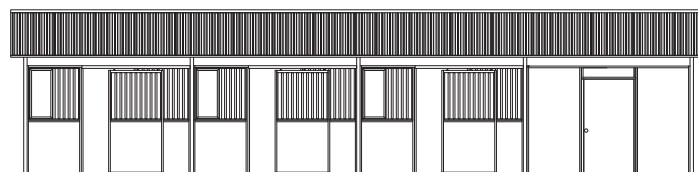
### FCP-S-101A 8' Porch - 4 Stall Shedrow



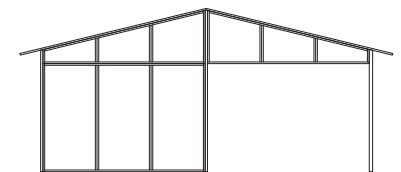
### FCP-S-101B 12' Porch - 4 Stall Shedrow



8' Porch Side View Elevation



Front View Elevation  
(Stall Doors Shown Half Open)

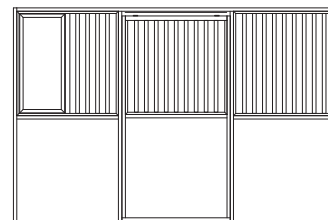


12' Porch Side View Elevation

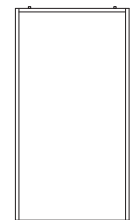
## DETAILS

- 3 - 12'x12' Stalls (12'x8' or 12'x16' Sizes Also Available)
- 1 - 12'x12' Tack, Storage, or Office with Steel Man Door and 4'x4' Window
- Titan Stall Front with Feed Door (Other Options Available)
- Solid Rear Sliding Stall Doors
- 3/12 to 6/12 Metal Roof Pitch
- 9' Eave Height and 18" Soffits
- 8' or 12' Porch Overhang
- Painted Steel Sided Walls (Other Options Available)
- Kick/Chew Proof and Fire Resistant

TITAN STALL FRONT



SOLID REAR SLIDING STALL DOOR



Standard Materials & Colors - See <https://fcpbarns.com/barn-design-options/color-options/>

Consult your FCP Sales Rep for custom options including converting a stall unit into a tack, storage room, wash or open bay, window and door options, cupolas, porch overhangs, colors, and material options including wood T1-11, tongue and groove, and many more options. *Visit [FCPbarns.com](https://fcpbarns.com) to learn more.*

**America's "Best-Built"**  
**Barns & Buildings**

*Let's make something great together!*

©FCP Inc. - All Rights Reserved

**800-807-BARN (2276)**  
**FCPbarns.com**