

# BARN PLAN

START A CONVERSATION BASED ON THIS PLAN

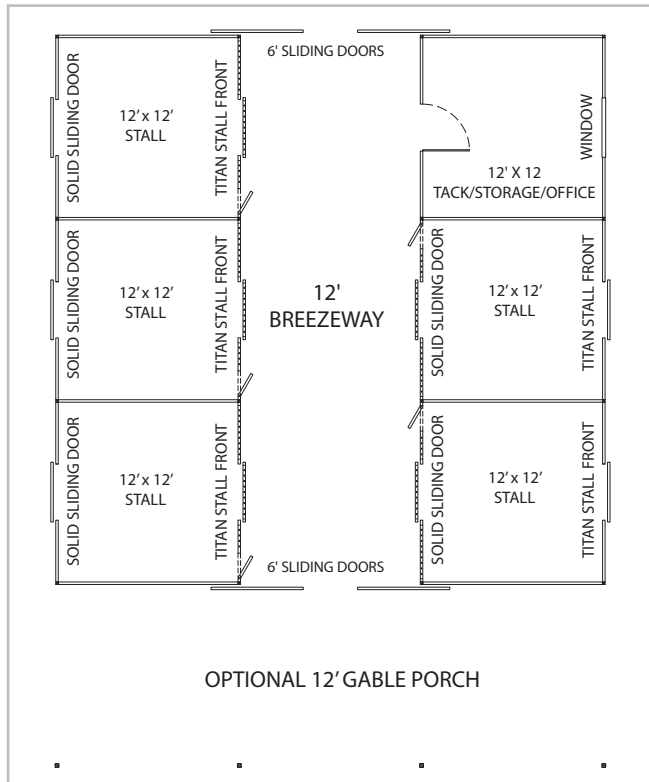
## FCP-R-151A or FCP-R-151B



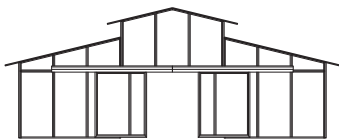
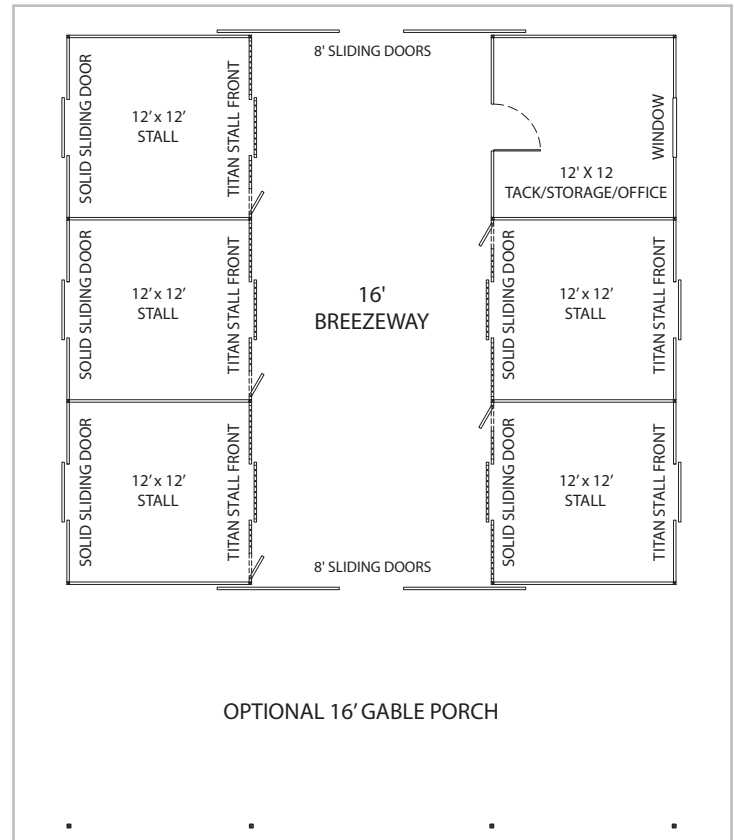
**BARNs & BUILDINGS**

*Creative Steel Solutions*

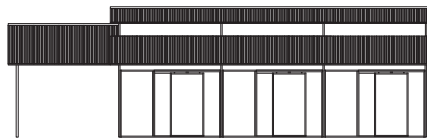
### FCP-R-151A 12' Breezeway - 6 Stall RCA Barn



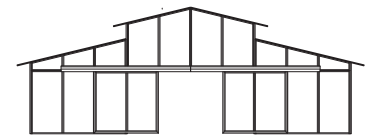
### FCP-R-151B 16' Breezeway - 6 Stall RCA Barn



12' Breezeway RCA Barn Elevation  
(Shown with 6' Sliding Doors Half Open)



Side Elevation Showing 12' Porch  
(Shown with Rear Stall Doors Half Open)

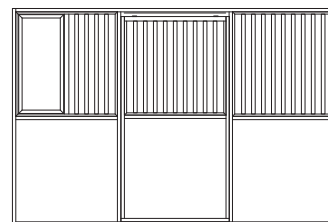


16' Breezeway RCA Barn Elevation  
(Shown with 8' Sliding Doors Half Open)

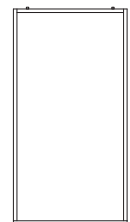
## DETAILS

- 5 - 12'x12' Stalls (12'x8' or 12'x16' Sizes Also Available)
- 1 - 12'x12' Tack, Storage, or Office with Steel Man Door and 4'x4' Window
- 12' or 16' RCA Style Breezeway with Two 6' or 8' Sliding Doors
- Titan Stall Front with Feed Door (Other Options Available)
- Solid Rear Sliding Stall Doors
- 3/12 to 6/12 Metal Roof Pitch
- 9' Eave Height and 18" Soffits
- Optional 12' or 16' Gable Porch Overhang
- Painted Steel Sided Walls (Other Options Available)
- Kick/Chew Proof and Fire Resistant

TITAN STALL FRONT



SOLID REAR SLIDING STALL DOOR



Standard Materials & Colors - See <https://fcpbarns.com/barn-design-options/color-options/>

Consult your FCP Sales Rep for custom options including converting a stall unit into a tack, storage room, wash or open bay, window and door options, cupolas, porch overhangs, colors, and material options including wood T1-11, tongue and groove, and many more options. Visit [FCPbarns.com](https://fcpbarns.com) to learn more.