

BARN PLAN

START A CONVERSATION BASED ON THIS PLAN

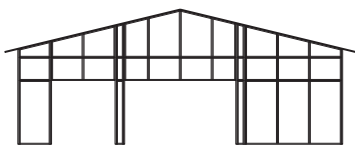
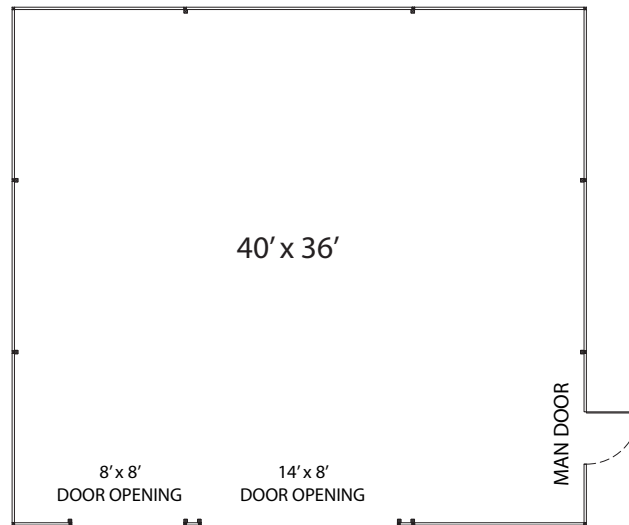
FCP-B-203A or FCP-B-203B



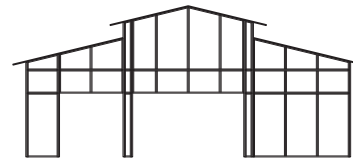
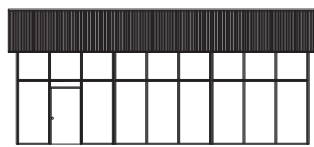
BARN & BUILDINGS

Creative Steel Solutions

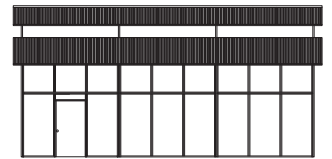
FCP-B-203A (Gable) or FCP-B203B (RCA) 40' x 36' x 12' Freestand Building



FCP-B-203A GABLE STYLE ELEVATION



FCP-B-203B RCA STYLE ELEVATION



DETAILS

- 40' X 36' Freestand Building (Choice of Gable or RCA Style)
- 12' Eave Height and 18" Soffits
- 1 - 8' x 8' Door Opening
- 1 - 14' x 8' Door Opening
- Steel Man Door
- 3/12 to 6/12 Metal Roof Pitch
- Painted Steel Sided Walls (Other Options Available)

Standard Materials & Colors - See <https://fcpbarns.com/barn-design-options/color-options/>

Consult your FCP Sales Rep for custom options including inner walls, mezzanines, window and door options, cupolas, porch overhangs, colors, and material options including wood T1-11, tongue and groove, and many more options. *Visit [FCPbarns.com](https://fcpbarns.com) to learn more.*

America's "Best-Built"
Barns & Buildings

Let's make something great together!

©FCP Inc. - All Rights Reserved

800-807-BARN (2276)
FCPbarns.com