

BARN PLAN

START A CONVERSATION BASED ON THIS PLAN

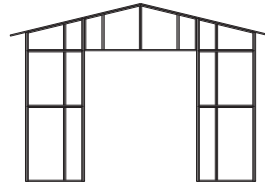
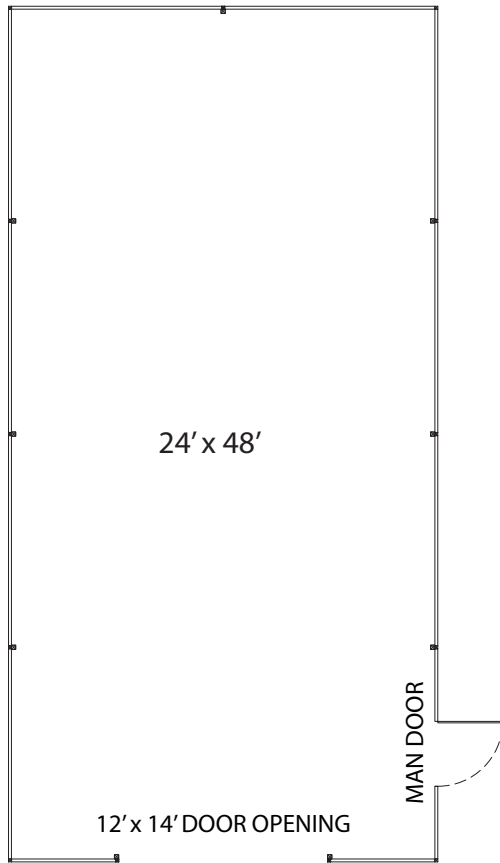
FCP-B-201A or FCP-B-201B



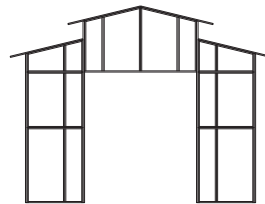
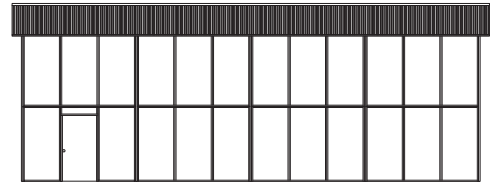
BARNS & BUILDINGS

Creative Steel Solutions

FCP-B-201A (Gable) or FCP-B-201B (RCA) 24' x 48' x 16' Freestand Building



FCP-B-201A GABLE STYLE ELEVATION



FCP-B-201B RCA STYLE ELEVATION

DETAILS

- 24' X 48' Freestand Building (Choice of Gable or RCA Style)
- 16' Eave Height and 18" Soffits
- 12' x 14' Door Opening
- Steel Man Door
- 3/12 to 6/12 Metal Roof Pitch
- Painted Steel Sided Walls (Other Options Available)

Standard Materials & Colors - See <https://fcpbarns.com/barn-design-options/color-options/>

Consult your FCP Sales Rep for custom options including inner walls, mezzanines, window and door options, cupolas, porch overhangs, colors, and material options including wood T1-11, tongue and groove, and many more options. *Visit [FCPbarns.com](https://fcpbarns.com) to learn more.*

America's "Best-Built"
Barns & Buildings

Let's make something great together!

©FCP Inc. - All Rights Reserved

800-807-BARN (2276)

[FCPbarns.com](https://fcpbarns.com)