

# BARN PLAN

START A CONVERSATION BASED ON THIS PLAN

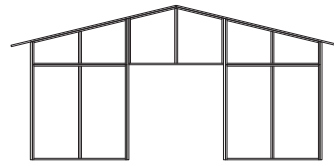
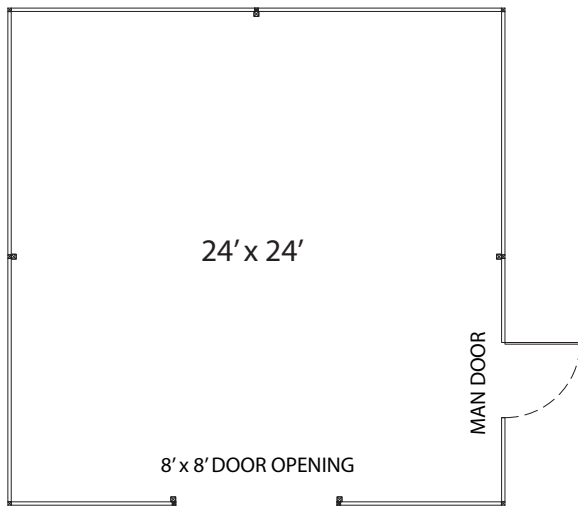
## FCP-B-200A or FCP-B-200B



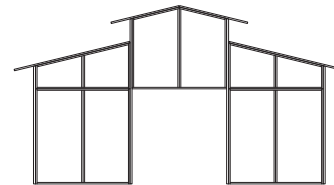
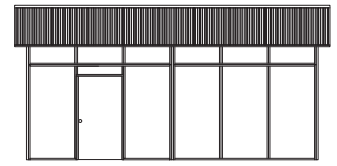
**BARN & BUILDINGS**

*Creative Steel Solutions*

### FCP-B-200A (Gable) or FCP-B200B (RCA) 24' x 24' x 10' Freestand Building



FCP-B-200A GABLE STYLE ELEVATION



FCP-B-200B RCA STYLE ELEVATION

## DETAILS

- 24' X 24' Freestand Building (Choice of Gable or RCA Style)
- 8' x 8' Door Opening
- Steel Man Door
- 3/12 to 6/12 Metal Roof Pitch
- 10' Eave Height and 18" Soffits
- Painted Steel Sided Walls (Other Options Available)

Standard Materials & Colors - See <https://fcpbarns.com/barn-design-options/color-options/>

Consult your FCP Sales Rep for custom options including inner walls, mezzanines, window and door options, cupolas, porch overhangs, colors, and material options including wood T1-11, tongue and groove, and many more options. *Visit [FCPbarns.com](https://fcpbarns.com) to learn more.*

**America's "Best-Built"**  
**Barns & Buildings**

*Let's make something great together!*

©FCP Inc. - All Rights Reserved

**800-807-BARN (2276)**  
**FCPbarns.com**