

BARN PLAN

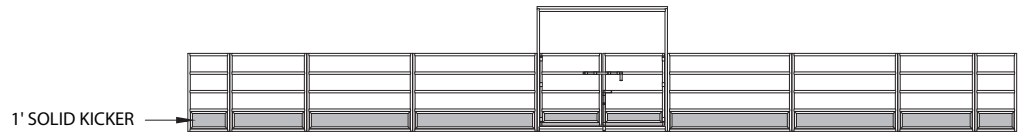
Start a conversation based on this plan

FCP-10A
FCP-10B
FCP-10C



BARN & BUILDINGS

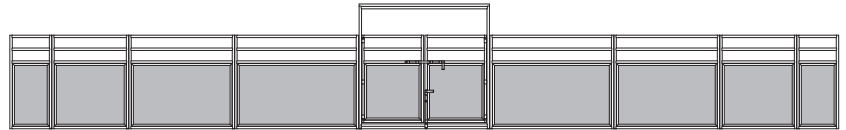
Creative Steel Solutions



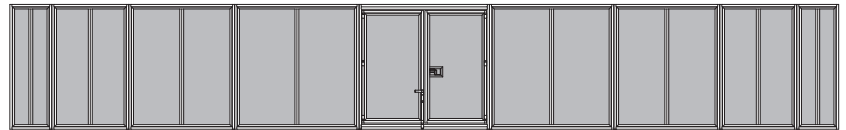
FCP-10A (Round Pen)



50' Round Pen



FCP-10B (Longeing Pen)



FCP-10C (Breaking Pen)

DETAILS

- 1-7/8" x 15 GA Galvanized Tubing
- 3/4" Steel Laminated Panels - Fully welded with heavy gauge channel and Gatorshield™ tubing, double thickness galvanized bottom rails and un-pierced channels for protection against water penetrations and other environmental conditions
- Kick/Chew Proof and Fire Resistant

Standard Materials & Colors - See <https://fcpbarns.com/barn-design-options/color-options/>
Visit [FCPbarns.com](https://fcpbarns.com) to learn more.